

Алматы (7273)495-231
Ангарск (3955)60-70-56
Архангельск (8182)63-90-72
Астрахань (8512)99-46-04
Барнаул (3852)73-04-60
Белгород (4722)40-23-64
Благовещенск (4162)22-76-07
Брянск (4832)59-03-52
Владивосток (423)249-28-31
Владикавказ (8672)28-90-48
Владимир (4922)49-43-18
Волгоград (844)278-03-48
Вологда (8172)26-41-59
Воронеж (473)204-51-73
Екатеринбург (343)384-55-89
Иваново (4932)77-34-06
Ижевск (3412)26-03-58
Иркутск (395)279-98-46
Казань (843)206-01-48

Калининград (4012)72-03-81
Калуга (4842)92-23-67
Кемерово (3842)65-04-62
Киров (8332)68-02-04
Коломна (4966)23-41-49
Кострома (4942)77-07-48
Краснодар (861)203-40-90
Красноярск (391)204-63-61
Курган (3522)50-90-47
Курск (4712)77-13-04
Липецк (4742)52-20-81
Магнитогорск (3519)55-03-13
Москва (495)268-04-70
Мурманск (8152)59-64-93
Набережные Челны (8552)20-53-41
Нижний Новгород (831)429-08-12
Новокузнецк (3843)20-46-81
Новосибирск (383)227-86-73
Ноябрьск(3496)41-32-12

Омск (3812)21-46-40
Орел (4862)44-53-42
Оренбург (3532)37-68-04
Пенза (8412)22-31-16
Пермь (342)205-81-47
Петрозаводск (8142)55-98-37
Псков (8112)59-10-37
Ростов-на-Дону (863)308-18-15
Рязань (4912)46-61-64
Самара (846)206-03-16
Санкт-Петербург (812)309-46-40
Саранск (8342)22-96-24
Саратов (845)249-38-78
Севастополь (8692)22-31-93
Симферополь (3652)67-13-56
Смоленск (4812)29-41-54
Сочи (862)225-72-31
Ставрополь (8652)20-65-13
Сургут (3462)77-98-35

Сыктывкар (8212)25-95-17
Тамбов (4752)50-40-97
Тверь (4822)63-31-35
Тольятти (8482)63-91-07
Томск (3822)98-41-53
Тула (4872)33-79-87
Тюмень (3452)66-21-18
Улан-Удэ (3012)59-97-51
Ульяновск (8422)24-23-59
Уфа (347)229-48-12
Хабаровск (4212)92-98-04
Чебоксары (8352)28-53-07
Челябинск (351)202-03-61
Череповец (8202)49-02-64
Чита (3022)38-34-83
Якутск (4112)23-90-97
Ярославль (4852)69-52-93

Россия +7(495)268-04-70

Казахстан +7(7172)727-132

Киргизия +996(312)96-26-47

<http://loundlux.nt-rt.ru> || exz@nt-rt.ru

ГЛАДИЛЬНЫЕ КАТКИ C-FLEX

Технические характеристики

Heavy duty flatwork ironer

C-Flex 900, 1200



Features and benefits

- Chest type industrial ironer with mobile chest and fixed roll, offering a constant pressure and a maximum ironing surface for the utmost ironing quality
- Steam or thermal fluid heating
- The unique design of the chest and roll combined with an improved thermal insulation give a thermal output close to 97%
- Up to three chest can be mounted together for a 50m/min maximum ironing speed
- Simple and reliable drive, possible thanks to the fixed roll technology
- One adjustable suction fan per roll for an improved vapor suction
- Springpress® fitting for an optimum roll and chest contact and an optimized vapor extraction

Main options

- Stainless steel Springpress® fitting for an extended longevity
- Nomex padding withstand temperatures above 180°C
- Extra insulation of the casings for a lower energy consumption and an improved working environment
- Vacuum feeding table for an easier use
- Preset ironing speeds or special speed ranges to customize the ironing to the user specificities
- Connection with feeding and folding systems

Main specifications			C-Flex 900	C-Flex 1200
Max. water evaporation*		l/h	205-	210-1260
Cylinder	number		1-	1-3
	diameter	mm	900	1200
	length	mm	2700, 3000, 3300, 3500	3000, 3300, 3500, 4200
Ironing speed**		m/min	4-	6-51
Heating	steam consumption***	kg/h	240-	295-1530

* 12 bars steam heating, smallest – biggest machine and 100% cylinder use, see detailed data

** See detailed data for available speed ranges per dimension

*** 12 bar steam heating, smallest – biggest machine, see detailed data

Electrical connections		927	930	933	935
Voltage					
	400-415V 3AC 50Hz – 1 roll kW			4.6	
	400-415V 3AC 50Hz – 2 rolls kW			12	
	400-415V 3AC 50Hz – 3 rolls kW			22	
Steam and air connections					
Max. steam pressure	kPa			1400	
Compressed air	DN			15	
1 roll					
Steam	DN			32	
Condensate	DN			25	
Exhaust dia. (K)	mm			200	
Evacuated air	m ³ /h			2000	
2 rolls					
Steam	DN			40	
Condensate	DN			32	
Exhaust dia. (K)	mm			2 x 200	
Evacuated air	m ³ /h			2 x 2000	
3 rolls					
Steam	DN			50	
Condensate	DN			40	
Exhaust dia. (K)	mm			3 x 200	
Evacuated air	m ³ /h			3 x 2000	
Sound level					
Airborne sound level	dB(A)			66	
Heat emission					
% of installed power, standard insulation				5	
% of installed power, extra insulation				3	
Performances and energy consumption					
1 roll					
Max. water evaporation (14 bar)	l/h	205	225	250	265
Steam average consumption (12 bar)	kg/h	240	270	300	320
Average linen output (12 bar)*	kg/h	330	370	410	435
Ironing speed**	m/min	5-15			
2 rolls					
Max. water evaporation (14 bar)	l/h	410	450	500	530
Steam average consumption (12 bar)	kg/h	480	540	600	640
Average linen output (12 bar)*	kg/h	660	740	820	870
Ironing speed**	m/min	9-27			
3 rolls					
Max. water evaporation (14 bar)	l/h	615	675	750	795
Steam average consumption (12 bar)	kg/h	720	810	900	960
Average linen output (12 bar)*	kg/h	940	1110	1230	1305
Ironing speed**	m/min	14-42			
Dimensions					
A width	mm	3900	4200	4500	4700
B ironing width	mm	2700	3000	3300	3500
C length 1 roll	mm	1685			
C length 2 rolls	mm	2955			
C length 3 rolls	mm	4225			
D height	mm	1560			
Net weight					
1 roll	kg	3010	3200	3400	3530
2 rolls	kg	5980	6360	6760	7030
3 rolls	kg	8950	9550	10170	10600

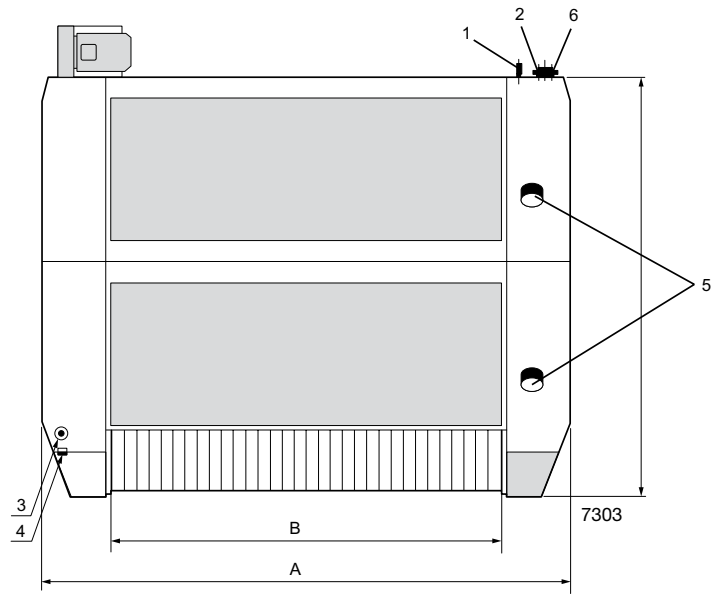
* 50% residual moisture, 140 gr/m² polyester-cotton linen, 100% cylinder use

** Other speed range available on request

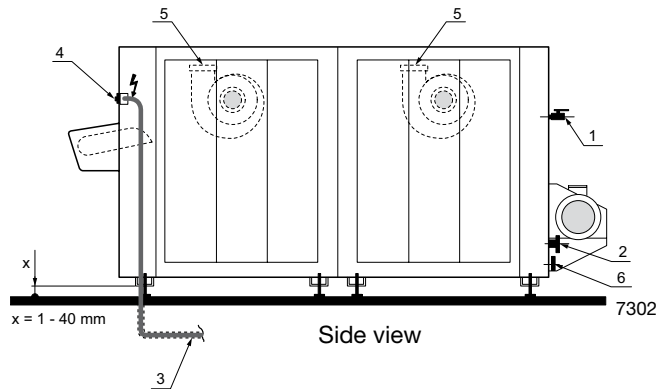
Electrical connections		1230	1233	1235	1242
Voltage					
400-415V 3AC 50Hz – 1 roll	kW			7.9	
400-415V 3AC 50Hz – 2 rolls	kW			19.6	
400-415V 3AC 50Hz – 3 rolls	kW			30	
Steam and air connections					
Max. steam pressure	kPa			1400	
Compressed air	DN			15	
1 roll					
Steam	DN			40	
Condensate	DN			32	
Exhaust dia. (K)	mm			200	
Evacuated air	m ³ /h			2000	
2 rolls					
Steam	DN			50	
Condensate	DN			40	
Exhaust dia. (K)	mm			2 x 200	
Evacuated air	m ³ /h			2 x 2000	
3 rolls					
Steam	DN			65	
Condensate	DN			50	
Exhaust dia. (K)	mm			3 x 200	
Evacuated air	m ³ /h			3 x 2000	
Sound level					
Airborne sound level	dB(A)			66	
Heat emission					
% of installed power, standard insulation				5	
% of installed power, extra insulation				3	
Performances and energy consumption					
1 roll					
Max. water evaporation (14 bar)	l/h	300	330	350	420
Steam average consumption (12 bar)	kg/h	360	395	420	510
Average linen output (12 bar)*	kg/h	500	550	585	710
Ironing speed**	m/min			8-24	
2 rolls					
Max. water evaporation (14 bar)	l/h	600	660	700	840
Steam average consumption (12 bar)	kg/h	720	790	840	1020
Average linen output (12 bar)*	kg/h	1000	1100	1170	1420
Ironing speed**	m/min			14-43	
3 rolls					
Max. water evaporation (14 bar)	l/h	900	990	1050	1260
Steam average consumption (12 bar)	kg/h	1080	1185	1260	1530
Average linen output (12 bar)*	kg/h	1500	1650	1755	2130
Ironing speed**	m/min			14-43	
Dimensions					
A width	mm	4200	4500	4700	5400
B ironing width	mm	3000	3300	3500	4200
C length 1 roll	mm			1985	
C length 2 rolls	mm			3555	
C length 3 rolls	mm			5125	
D height	mm			1760	
Net weight					
1 roll	kg	3860	4100	4360	4820
2 rolls	kg	7700	8200	8530	9700
3 rolls	kg	11630	12400	12900	14650

* 50% residual moisture, 140 gr/m² polyester-cotton linen, 100% cylinder use

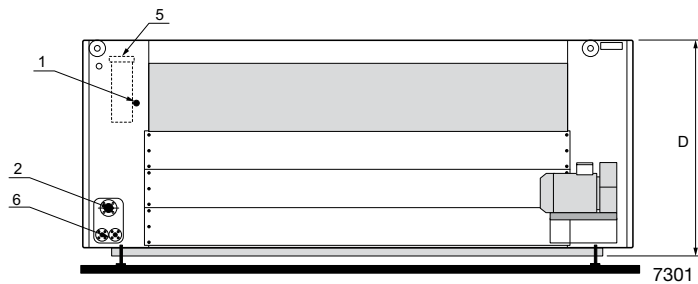
** Other speed range available on request



Top view



Side view



Rear view

- | | |
|-------------------------------|--------------------------------|
| 1 Compressed air inlet | 4 Main switch |
| 2 Steam inlet | 5 Vapor exhaust |
| 3 Electric connection | 6 Condensate connection |

Алматы (7273)495-231
Ангарск (3955)60-70-56
Архангельск (8182)63-90-72
Астрахань (8512)99-46-04
Барнаул (3852)73-04-60
Белгород (4722)40-23-64
Благовещенск (4162)22-76-07
Брянск (4832)59-03-52
Владивосток (423)249-28-31
Владикавказ (8672)28-90-48
Владимир (4922)49-43-18
Волгоград (844)278-03-48
Вологда (8172)26-41-59
Воронеж (473)204-51-73
Екатеринбург (343)384-55-89
Иваново (4932)77-34-06
Ижевск (3412)26-03-58
Иркутск (395)279-98-46
Казань (843)206-01-48

Калининград (4012)72-03-81
Калуга (4842)92-23-67
Кемерово (3842)65-04-62
Киров (8332)68-02-04
Коломна (4966)23-41-49
Кострома (4942)77-07-48
Краснодар (861)203-40-90
Красноярск (391)204-63-61
Курган (3522)50-90-47
Курск (4712)77-13-04
Липецк (4742)52-20-81
Магнитогорск (3519)55-03-13
Москва (495)268-04-70
Мурманск (8152)59-64-93
Набережные Челны (8552)20-53-41
Нижний Новгород (831)429-08-12
Новокузнецк (3843)20-46-81
Новосибирск (383)227-86-73
Ноябрьск(3496)41-32-12

Омск (3812)21-46-40
Орел (4862)44-53-42
Оренбург (3532)37-68-04
Пенза (8412)22-31-16
Пермь (342)205-81-47
Петрозаводск (8142)55-98-37
Псков (8112)59-10-37
Ростов-на-Дону (863)308-18-15
Рязань (4912)46-61-64
Самара (846)206-03-16
Санкт-Петербург (812)309-46-40
Саранск (8342)22-96-24
Саратов (845)249-38-78
Севастополь (8692)22-31-93
Симферополь (3652)67-13-56
Смоленск (4812)29-41-54
Сочи (862)225-72-31
Ставрополь (8652)20-65-13
Сургут (3462)77-98-35

Сыктывкар (8212)25-95-17
Тамбов (4752)50-40-97
Тверь (4822)63-31-35
Тольятти (8482)63-91-07
Томск (3822)98-41-53
Тула (4872)33-79-87
Тюмень (3452)66-21-18
Улан-Удэ (3012)59-97-51
Ульяновск (8422)24-23-59
Уфа (347)229-48-12
Хабаровск (4212)92-98-04
Чебоксары (8352)28-53-07
Челябинск (351)202-03-61
Череповец (8202)49-02-64
Чита (3022)38-34-83
Якутск (4112)23-90-97
Ярославль (4852)69-52-93

Россия +7(495)268-04-70

Казахстан +7(7172)727-132

Киргизия +996(312)96-26-47

<http://loundlux.nt-rt.ru> || exz@nt-rt.ru